



Welcome

**LOVE ESTATES APARTMENTS,  
WESTERN NEW PROVIDENCE, BAHAMAS**

PET-FRIENDLY APARTEMENTS



# LOVE ESTATES APARTMENTS

## TABLE OF CONTENTS







1. Cover
2. Table of Contents
3. Rental Unit Information
4. Floor Plans
5. Photos
6. Photos
7. Photos
8. Photos
9. Photos
10. Amenities
11. House Info
12. What's Nearby
13. Nearby Restaurants
14. Nearby Restaurants
15. Things to Do



# LOVE ESTATES APARTMENTS

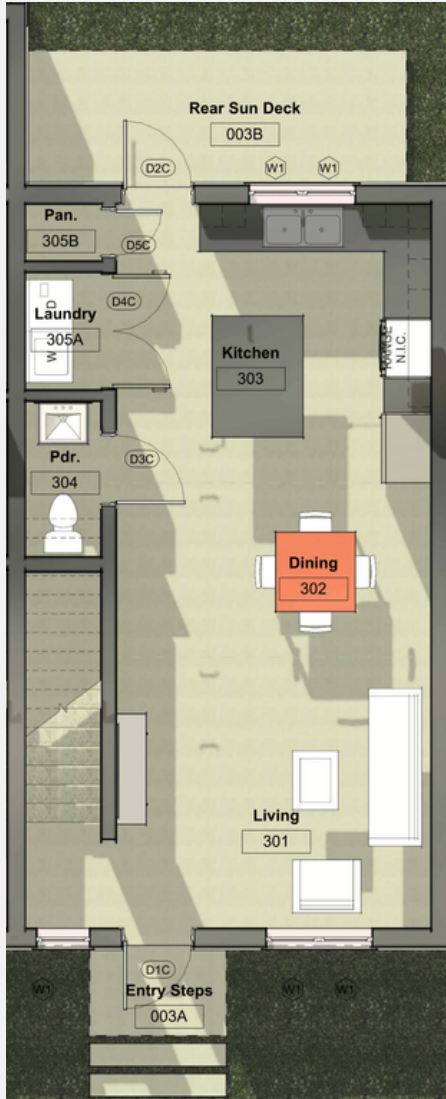
## RENTAL UNIT INFORMATION

---

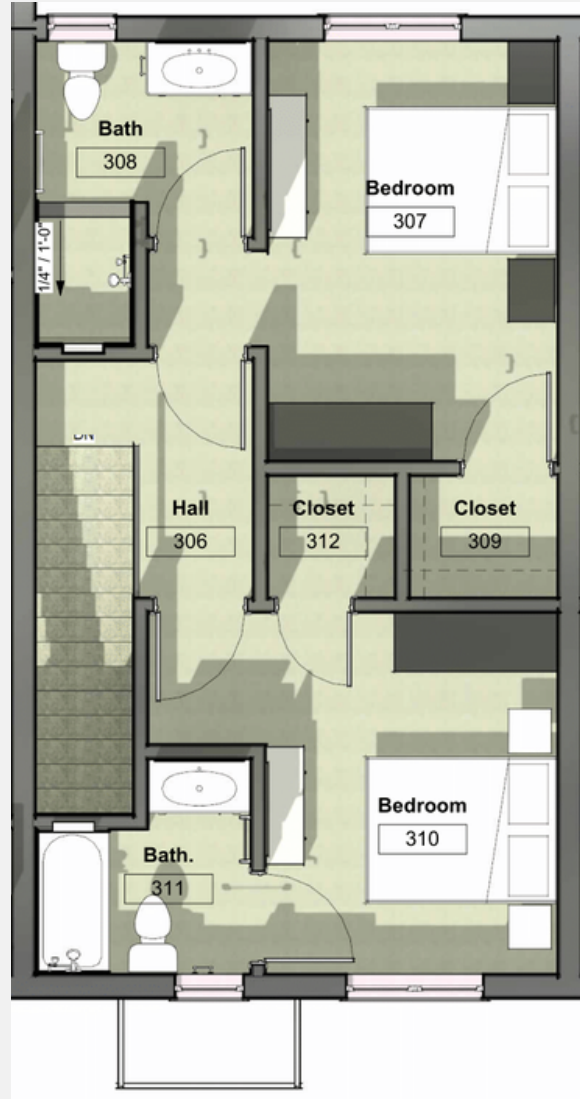
	<b>ADDRESS</b>	<p>Love Estates, Western New Providence, Bahamas.</p> <p>Directions: Enter Airport Industrial Park, take the first left and follow the bend. At the T-junction, turn left. Continue to the first road on your left (Grumpy Lane). Apartments will be on the corner.</p> <p>Google Maps directions: <a href="#">click link</a>.</p>
	<b>PROPERTY MANAGER</b>	<p>Adrian Forsythe (242) 424-0067 Adrianforsythe@hotmail.com</p>
	<b>BEDROOMS</b>	<p>2 ensuite bedrooms located on the second floor, both have a walk-in closet</p>
	<b>LIVING ROOM/ DINING/KITCHEN</b>	<p>Located on the ground floor is the open-plan living/dining/kitchen area.</p>
	<b>LAUNDRY ROOM</b>	<p>Located inside on the ground floor.</p>
	<b>PANTRY CLOSET</b>	<p>Located inside on the ground floor.</p>
	<b>RENT</b>	<p>Rent: \$3,000 per month Security Deposit: \$3,500</p> <p>First and last months rent; and security deposit is required upon moving in.</p>
	<b>REFERRAL COMISSION</b>	<p>\$500 referral commission (call for details).</p>

# LOVE ESTATES APARTMENTS

## FLOOR PLANS



GROUND FLOOR



SECOND FLOOR



LOVE ESTATES APARTMENTS

# PHOTOS

---



Image 1



Image 1



Image 1



Image 1

LOVE ESTATES APARTMENTS

# PHOTOS

---



Image 1



Image 1



Image 1



Image 1

LOVE ESTATES APARTMENTS

# PHOTOS

---



Image 1



Image 1



Image 1



Image 1



Image 1

# LOVE ESTATES APARTMENTS

## PHOTOS

---



Image 1

Image 1



Image 1



Image 1



Image 1



# LOVE ESTATES APARTMENTS

## PHOTOS

---



Image 1

Image 1



Image 1



Image 1



Image 1

# LOVE ESTATES APARTMENTS

## AMENITIES



### FURNITURE

#### Master Bedroom furniture

- King size bed with mattress
- Chest of drawers
- Night Stands (2)

#### Bedroom two

- Queen size bed with mattress
- Chest of drawers
- Night stands (2)

#### Living Room

- Couch
- Coffee table
- Side Tables (2)

#### Dining Table

- Dining table with four seats.



### APPLIANCES

#### Electric Stove

#### Fridge

#### Washer/Electric Dryer

#### TV (Living room)



### AIR CONDITIONING (SPLIT UNITS)

#### Master Bedroom

#### Second bedroom

#### Kitchen/Dining/Living



### UTILITIES

#### Water: (W&S)- Included

#### Power: Not included

- Bill in owner name and paid by the tenant

#### Solar: Included

#### Internet: (Starlink) - Included

#### Generator: Not included

#### Cable TV: Not included/available



### HOT WATER

#### Tank with recirculating pump

# LOVE ESTATES APARTMENTS

## HOUSE INFO

---



### SAFETY

- Fire Extinguisher & First Aid Kit: Located in pantry.
- Smoke alarm located in bedrooms, living & kitchen.
- Carbon monoxide detector



### PARKING

- Each apartment has 2 parking spots, additional guest parking is available.



### TRASH

- Garbage bins are provided on the northwest corner of the property.



### MISC. ITEMS

- Pets: Allowed
- Spray Foam Roof insulation: Yes
- Max occupants: Four
- Hurricane rated doors and windows: Yes
- Gated community: No

# LOVE ESTATES APARTMENTS

## WHAT'S NEARBY

---



### GAS

Shell service station, Old Fort Bay (1 Mile)  
Shell service station, Airport (2 Miles)



### GROCERY STORE

Solomons Fresh Market, Old Fort Bay (1 Miles)  
Supervalu, Atlantic Drive (6 miles)



### LIQUOR STORE

Keg Ranch Liquor (1 Mile)



### INTERNATIONAL AIRPORT

Sir Lynden Pindling Airport (1.5 Miles)  
Odyssey Aviation (4.5 Miles)  
Jet Nassau (3 Miles)



### HOSPITAL

Doctors Hospital, Collins Avenue, 242-302-4600  
Princess Margaret Hospital, Shirley Street, 242-322-2861



### PHARMACY

Smitty's Pharmacy (6 Miles)  
Your Friendly Pharmacy (2 Miles)



### SCHOOLS

Windsor School, Old Fort Bay (1.5 Miles)  
Lyford Cay International (3 Miles)  
Kings College (3.5 Miles)  
Windsor School, Albany Campus (4 Miles)  
Tambearly International (6 Miles)



# LOVE ESTATES APARTMENTS

## NEARBY RESTAURANTS



Kid-friendly menu



Vegetarian/Vegan options



Gluten-Free Options



Serves alcohol



### PIZZA LAB

(242) 788-8784

1 Baha Mar Blvd Fountain Level Grand Hyatt East Tower, Baha Mar Resort, Nassau New Providence Island

8 miles away



The menu features pizza, toasted paninis, fresh salads, handcrafted pastas, and cool, refreshing gelatos for dessert. In addition to a selection of cocktails, the family-friendly. Pizza Lab also offers tasty mocktails for kids.

### AQUAFIRE RESTAURANT

(242) 698-0119

West Bay Street, Nassau New Providence Island

2.5 miles away



Spectacular ocean views with indoor and outdoor dining. Executive Chef Ariana creates one-of-a-kind special dishes integrating local food and spices with international ingredients rendering a flavourful and artistic dish.



### SOLEMAR

(242) 327-4500

West Bay Street, Nassau, New Providence 00000

14 miles away



Located at the famous Compass Point in Nassau. Solemar offers a wide array of fresh seafood and meat options.

# LOVE ESTATES APARTMENTS

## NEARBY RESTAURANTS



### NAUGHTY JOHNNY'S

A

Serving you authentic Caribbean food that will warm your heart and fill your stomach.

(242) 377-7776

Near the airport located in a new shopping centre Old Fort Bay Town Centre, Nassau New Providence Island

10 miles away



### LA CAVERNA

K V A

Southern Italian Calabrian Cuisine, restaurant and bar outdoor patio

242) 601-0046

West Bay Street in Caves Village Plaza Nassau Nassau N.P, Bahamas

3.6 miles away

### SUSHI ROKKAN

V A

The cozy restaurant has an extensive selection of fresh fish flown in daily from the Sea of Japan as well as both the Atlantic and Pacific oceans.

(242) 377-0094

Windsor Field Road Old Fort Bay Town, Centre B3unit6, Nassau, Bahamas

11 miles away



### KYMA SEAFOOD GRILL

A

Located at the famous Compass Point in Nassau. Solemar offers a wide array of fresh seafood and meat options.

(242) 327-4500

West Bay Street, Nassau, New Providence 00000

14 miles away

## THINGS TO DO

---



### THE ISLAND HOUSE

The Island House stands out among Bahamian resorts, having been designed with both visitors and the local community in mind, and as a symbiotic extension of the surrounding environment. The property features 30 rooms and suites, exclusive private beach access, six rental apartments, two restaurants, a cafe, wine market, art house cinema, lap pool, movement studio, squash courts, TERN art gallery and a Bamford Spa.

### FUSION SUPERPLEX

Fusion Superplex is completely focused on providing customers with the ultimate entertainment experience. Every detail of the facility has been designed with the customer in mind, from choosing the perfect kernel of popcorn, tirelessly testing theatre seats for maximum comfort, to investing millions in the most up to date technologies in movie viewing, gaming and dining.



### BAHA MAR

Inspired by the natural beauty of The Bahamas, Baha Bay perfectly fuses relaxing island chill with exhilarating fun for the entire family. The luxe water park is set on 15 lush beachfront acres directly adjacent to Baha Mar. Guests enjoy unlimited access to Baha Bay during their stay. With an array of spectacular experiences and tantalizing cuisine, however you like to play in the sun, it awaits you at Baha Bay.

### ATLANTIS

Atlantis, Paradise Island - the most popular resort destination in The Bahamas - features the world's largest open-air marine habitat; Aquaventure water park, including the iconic Mayan Temple's Leap of Faith slider; 11 unique pools; renowned beaches; 18-hole golf course; the largest casino in the Caribbean; over 21 restaurants, 19 bars & lounges and Aura nightclub.

